

Location Map



OCEANUS

Constructive ideas
(An ISO 9001- 2008 & 14001:2004 Company)

2nd floor, San Rock Tower, Sriaryam, Thiruvananthapuram-695017 ? Ph: 0471 2559124/25/26/27/28 ? Mob: 9446 000 999 ? Email: tvmmktg@oceanus.co.in
Bangaluru ? Mysore ? Thiruvananthapuram ? Kochi ? Thrissur ? Palakkad ? Kannur ? Thalasseri ? Iritty ? Kasargod



OCEANUS

Constructive ideas
(An ISO 9001- 2008 & 14001:2004 Company)



MOON STONE

Luxury Apartments, Near Technopark

Make your world
under the moonlight





OCEANUS Moon Stone

Since many moons now we have been playing this idea in our minds to present you with something as nonchalant yet as enticing as the moon. Thus was born the Moon Stone, a residential complex, so sublime as the moon yet one that grows on you like an overpowering edifice complete with features that will make you proud. As nondescript in its looks yet the ultimate dwelling place laden with luxury and coziness. Moon Stone the latest offering from Oceanus Builders is located vantagely in a very sought after area at Trivandrum. Moon Stone offers a host of living option to choose from and abides by all the quality standards that have over time become a benchmark of Oceanus Builders.

SPECIFICATIONS

Structure	Seismic and compliant RCC framed structure.
Walls	6" Concrete block masonry for external walls and 4" concrete block masonry for internal walls.
Doors	Main door - Teak wood door frame and shutter. Other doors - Hard wood frame with compressed moulded wooden shutters.
	Liv/Din/ Balcony - Fully sliding Aluminium door shutters fixed with glass.
Windows	Aluminium windows, with powder coated frame & shutter, safety grills.
Flooring	Quality vitrified tile flooring for living, dining, bedrooms and kitchen. Antiskid floor tiles for toilets, balconies and utility.
Kitchen/Utility	20 mm thick polished granite counter top platform with stainless steel sink and 2" ceramic dadoing above the granite counter-top. Plumbing & electrical point for Aqua guard and Washing machine.
Toilet	Ceramic glazed tiles dado up to 7' - 8" height. Matching colored / white EWC with flush tank of Hindware / Barryware / Cera or Equivalent make. Health faucet in toilets. One hot & cold mixture unit for shower. All other fittings are of Crabtree / Jaguar / ESS / RC or Equivalent make.
Plaster	Acrylic emulsion paint for internal walls - roller.
Finish	Anti-Algal, weather-proof emulsion paint for external walls over plastered surface.
Power	5 KW power supply from TNEB and 1 KVA generator backup for each Apartment unit.
Water supply	Potable Borewell/ Municipal water.
Lift	One 8 passenger lift and one 13 passenger lift of reputed make with generator backup.
Intercom facility	One extension will be given for each flat.
Security	24 hours Security with surveillance through CCTV.



AMENITIES

- Visitor's lounge
- Children's Play Area.
- Gymnasium
- Indoor Game Area
- Multipurpose Hall.
- Refrigerated/Centralized Gas connection to each apartment.
- OWC/ Biogas Plant
- Provision for Broad band connection.
- Rain water harvesting.
- Disabled friendly access.
- Drivers' toilet/Servants' toilet.
- Letter Box.
- Back-up Generator.
- Care Taker Room
- CCTV Surveillance.
- Intercom Facility.
- Sewage Treatment Plant.



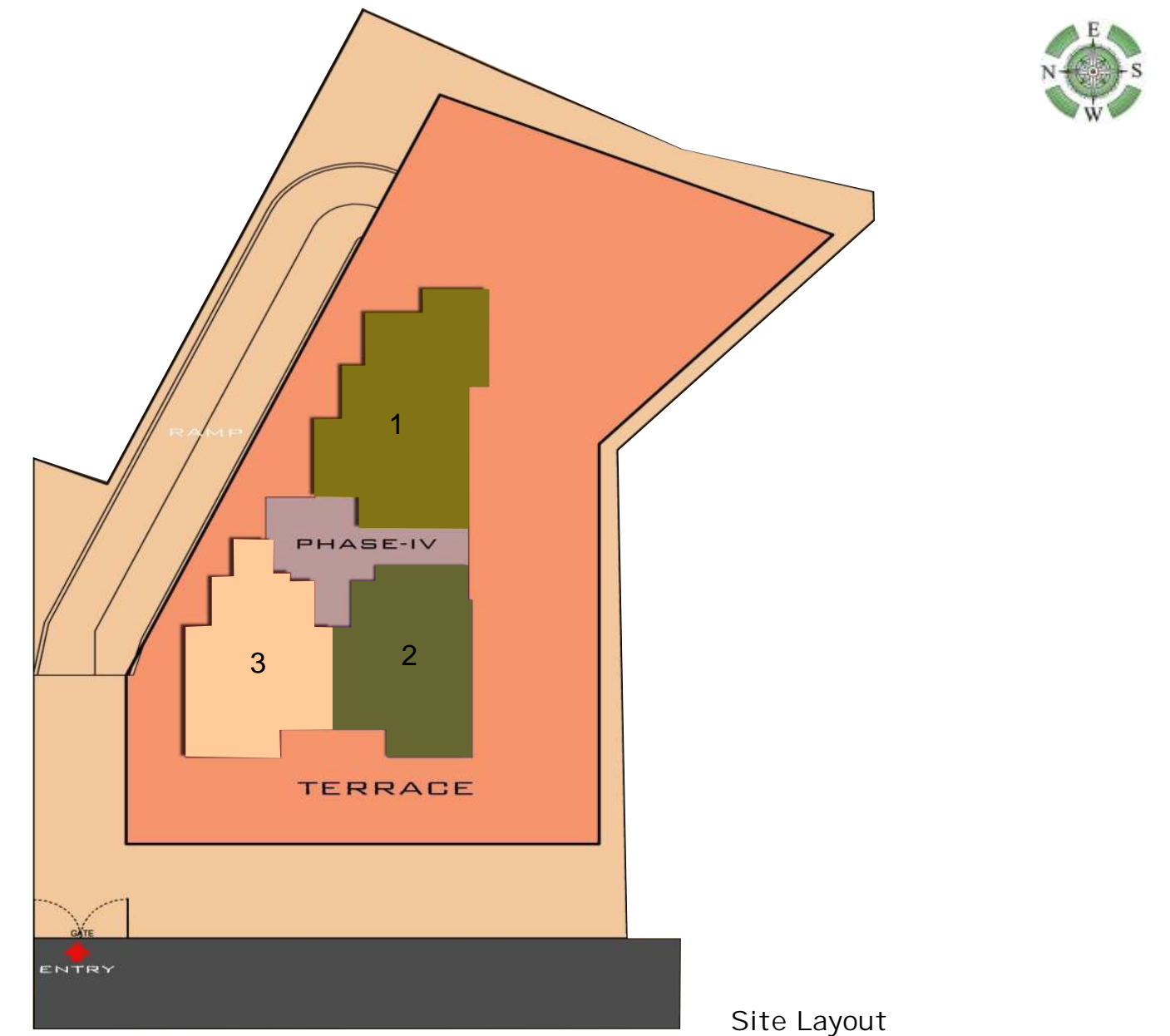


Series - 3
2 BHK Apartment
AREA - 1163 SqFt

The MoonStone Apartment advantage is location very close to World No.1 IT hub Thiruvananthapuram, yet in a serene neighbourhood insulated from the city's hustle and bustle.



Series 3





Series - 1
3 BHK Apartment
AREA - 1454 SqFt

The MoonStone Apartment advantage is location very close to World No.1 IT hub Thiruvananthapuram, yet in a serene neighbourhood insulated from the city's hustle and bustle.

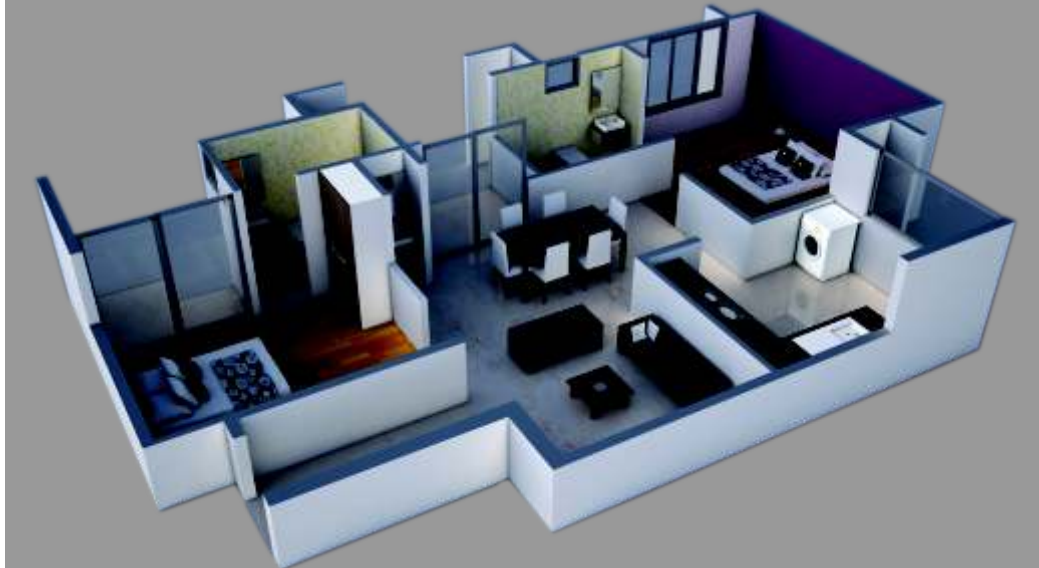


Series 1



Series - 2
2 BHK Apartment
AREA - 1106 SqFt

The MoonStone Apartment advantage is location very close to World No.1 IT hub Thiruvananthapuram, yet in a serene neighbourhood insulated from the city's hustle and bustle.



Series 2